



ENVIRONMENTAL LAW & POLICY CENTER
Protecting the Midwest's Environment and Natural Heritage

Future Energy Jobs Act and Solar Models Overview

Fox Valley Sustainability Network Energy Forum
January 18, 2018

MeLena Hessel – Policy Advocate

Environmental Law and Policy Center (ELPC)



ELPC is the Midwest's leading public interest environmental organization, working to advance environmental progress hand-in-hand with economic development



The Future Energy Jobs Act

SB 2814 / Public Act 99-0906

<http://www.ilga.gov/legislation/publicacts/99/PDF/099-0906.pdf>



ENVIRONMENTAL LAW & POLICY CENTER

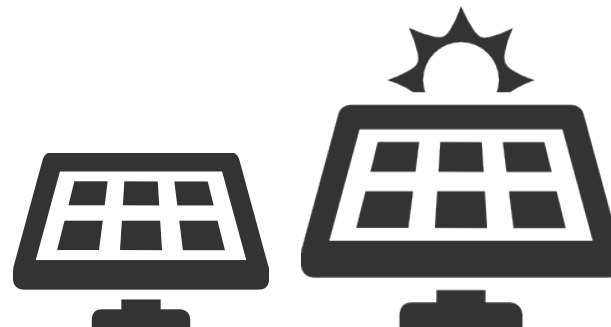
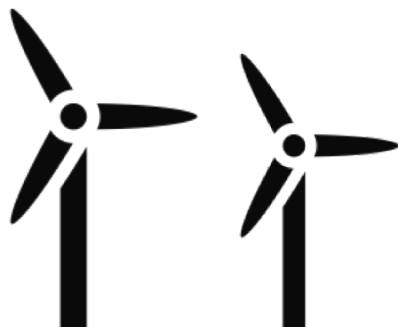
- What's in?
 - Renewable Energy
 - Energy Efficiency
 - Nuclear

Renewable Portfolio Standard (RPS) Fix



ENVIRONMENTAL LAW & POLICY CENTER

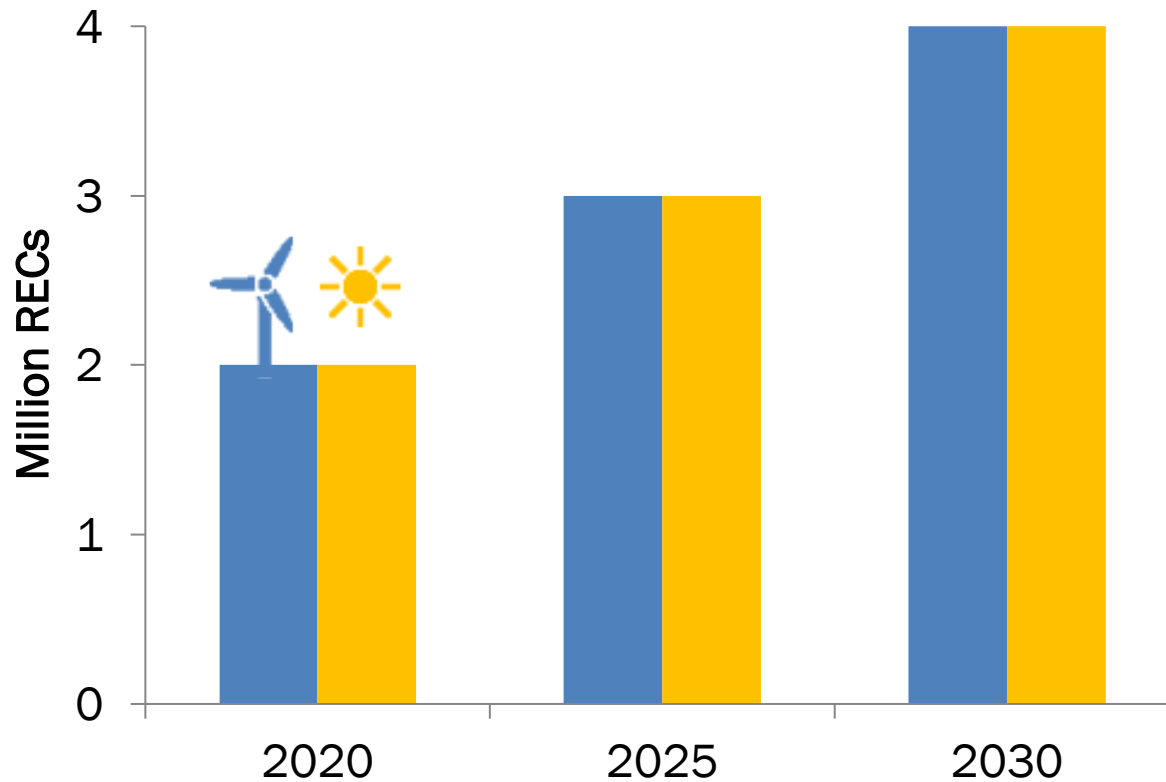
- 25% renewables by 2025 and years thereafter
 - Via purchase of Renewable Energy Credits (RECs)
- Stable, secure budget (~\$200 million/year)
- Long-term planning process
- “New build” and new for wind and solar
 - New solar programs: distributed generation, community solar, low-income “Solar for All”





New Build Requirements

Annual REC Procurements – New Build



1,300 MW new wind

4,000 MW today

33% increase

3,000 MW new solar

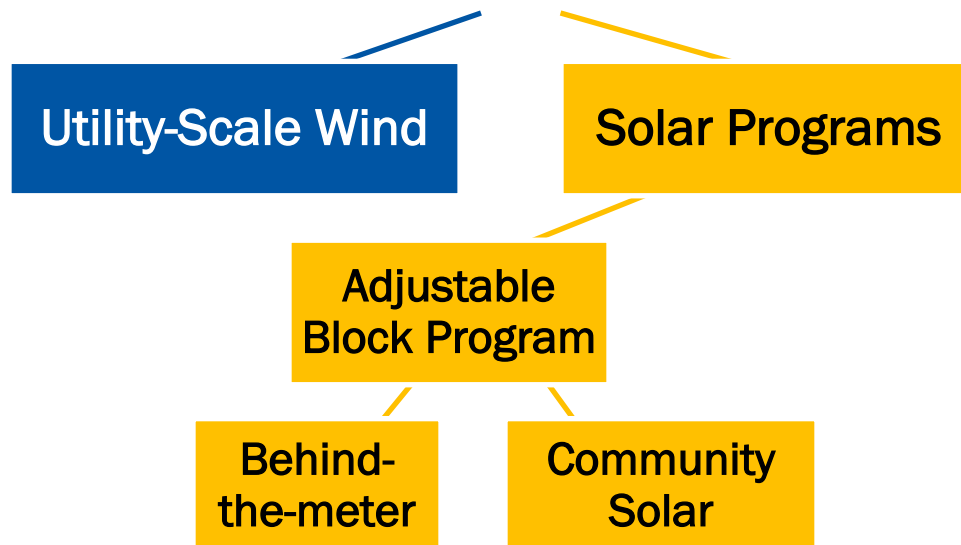
60 MW today

5,000% increase

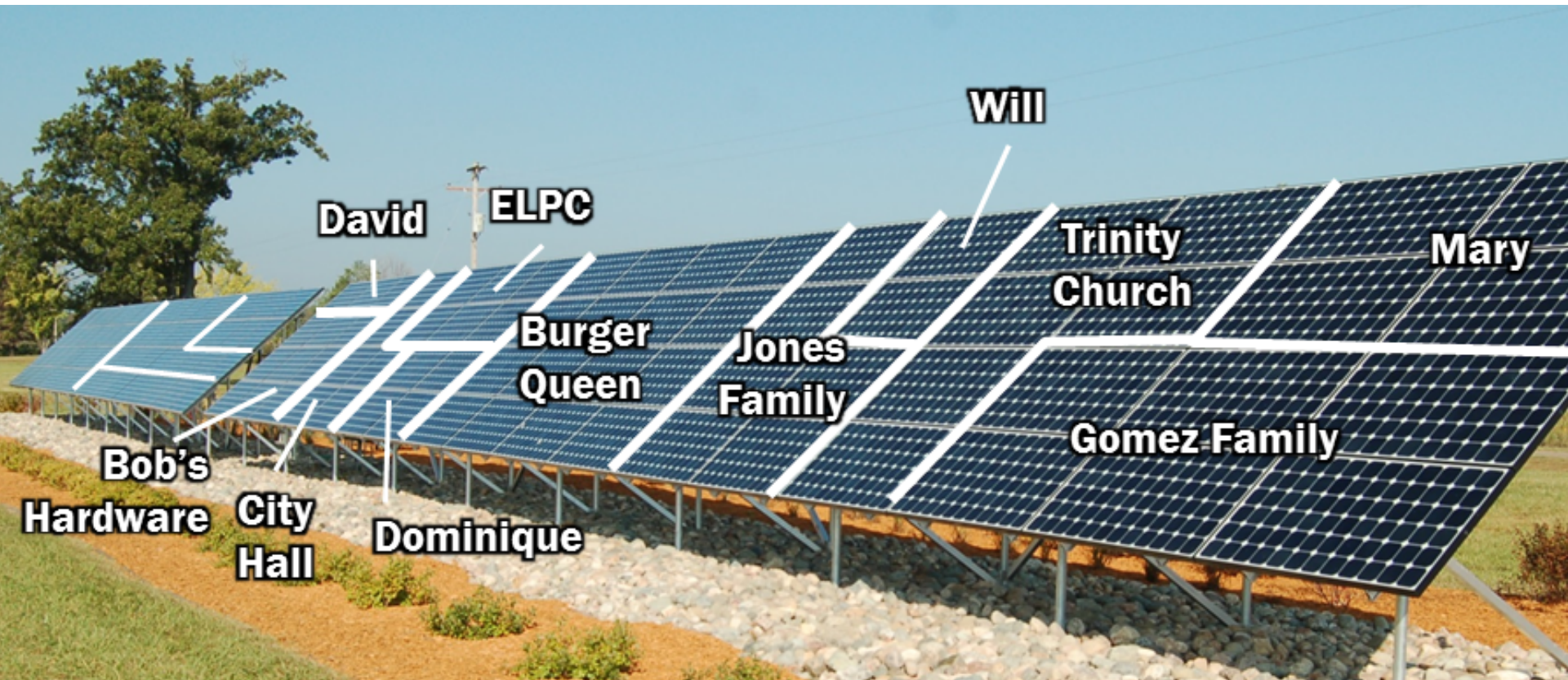


New Build Requirements

New Build Wind & Solar



Community Solar



Opportunities to host, anchor and subscribe!



Community Solar

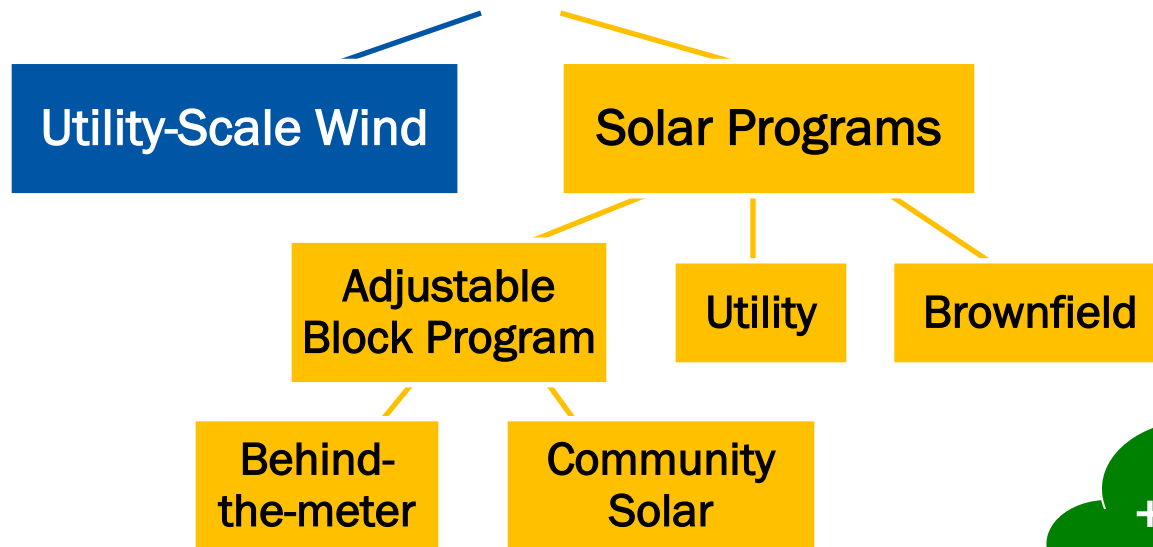


Opportunities to host, anchor and subscribe!



New Build Requirements

New Build Wind & Solar



**+Low Income Solar:
Illinois Solar for All**

IL Solar for All → Low-Income Solar



ENVIRONMENTAL LAW & POLICY CENTER

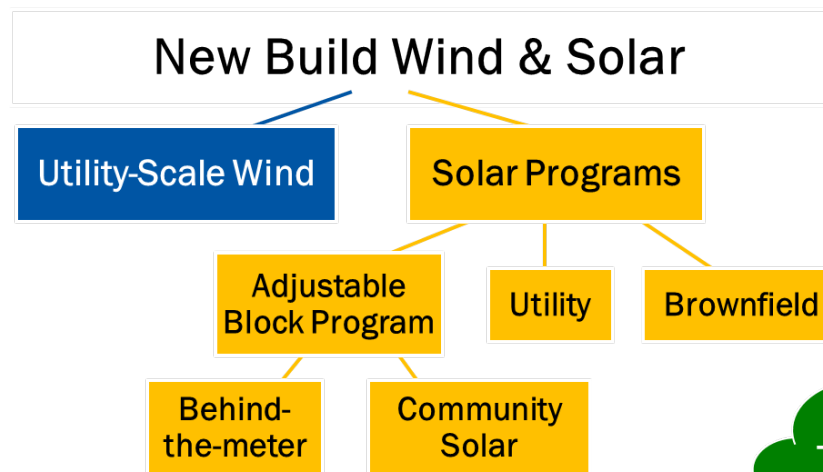


- Distributed Generation
- Non-profits and public facilities
- Community Solar
- Community Solar Pilot Projects

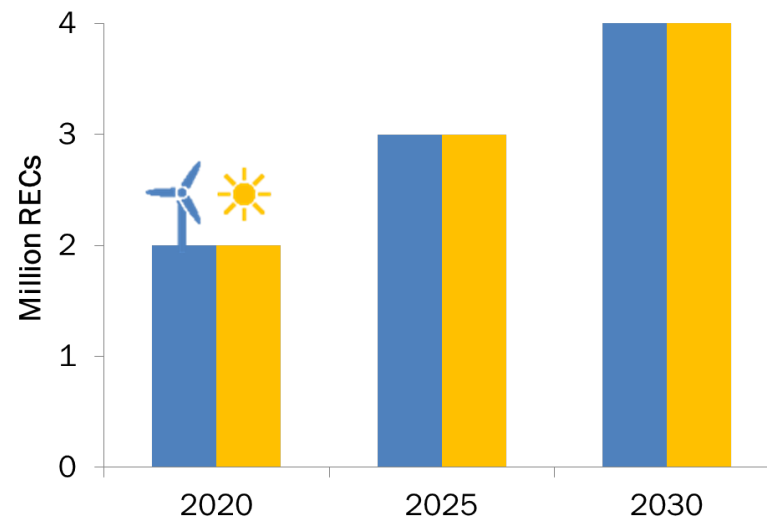
- **Lower bills for low-income customers**
- **Coordinate with ComEd solar job pipeline program**
- **Carve-out for environmental justice communities**



New Build Requirements



Annual REC Procurements – New Build



+ Low Income Solar:
Illinois Solar for All

Long-Term Renewable Resources Plan: Regulatory Process



ENVIRONMENTAL LAW & POLICY CENTER

September 29, 2017

IPA publishes initial Plan



November 13, 2017

Comment period
At least one hearing/utility



December 4, 2017

IPA revises Plan and files with Commission



Legal briefs (objections, replies, proposed order...)
Hearing if necessary

December to March



Commission approves / rejects Plan

April 3, 2018



IPA implements programs and procurement

Spring / Summer 2018

PROCESS REPEATS AT LEAST EVERY 2 YEARS!



Recognition for and **technical assistance** to help local communities remove barriers to and facilitate local solar development

- Permitting
- Planning, zoning, and development regulations
- Inspection
- Construction codes
- Solar rights
- Utility engagement
- Community engagement
- Market development and finance



Questions/Additional Info

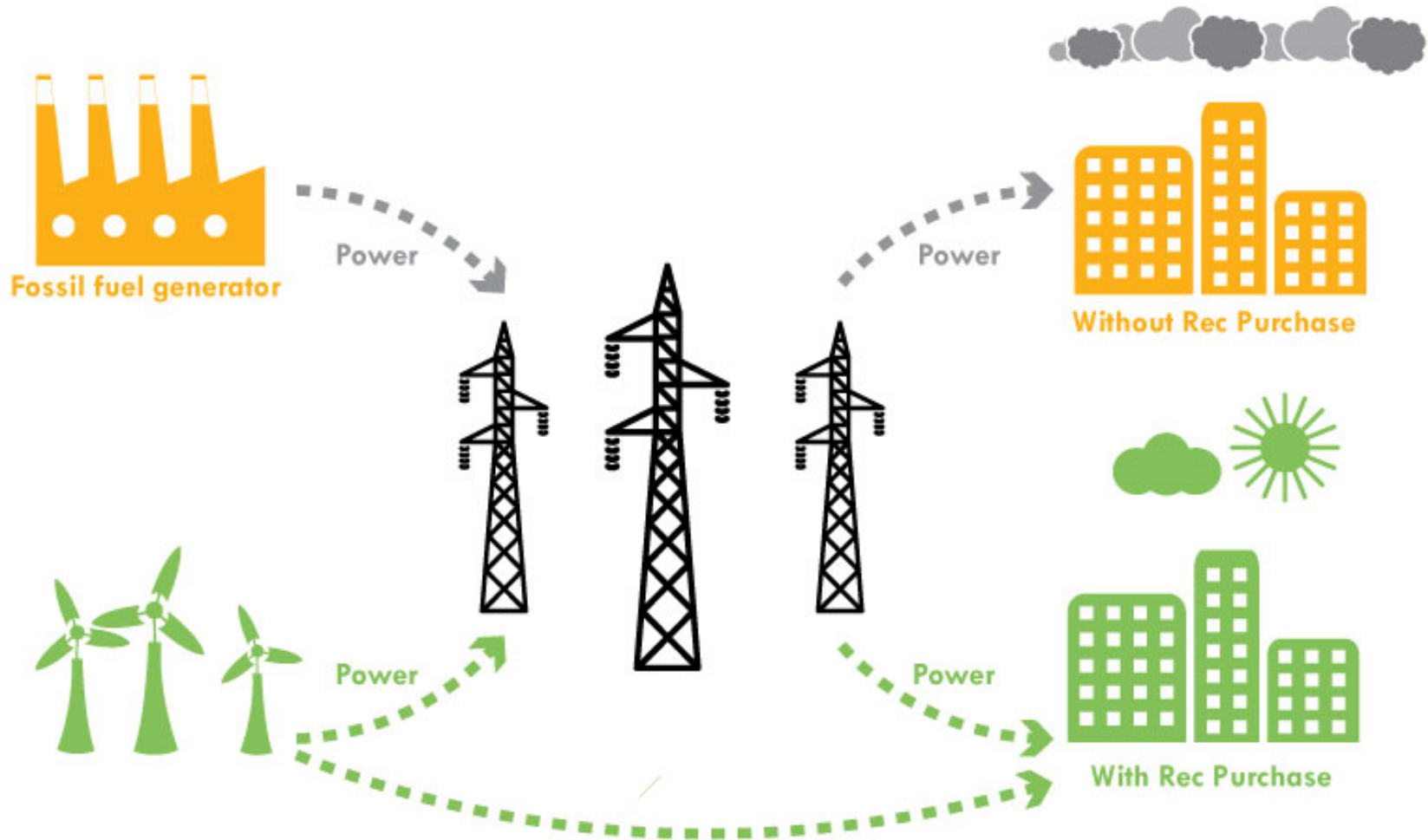
More on SolSmart: <https://www.solsmart.org>

Questions?

Contact me (MeLena Hessel) at mhessel@elpc.org

Visit our website at www.elpc.org

What is a Renewable Energy Credit/Certificate (REC)?



December 2015 ITC/PTC Extension



	ITC	PTC
2016	30%	100%
2017	30%	80%
2018	30%	60%
2019	30%	40%
2020	26%	-
2021	22%	-
2022	0%/10%	-

- ITC = Investment Tax Credit for solar energy technology
- PTC = Production Tax Credit for wind energy production
- ITC drops to 0% for residential projects in 2022 but stays at 10% for commercial/utility projects
- Solar must be in-service by 2024 to qualify for > 10% ITC
- PTC lasts for 10 years after facility placed in service
- 100% PTC = \$0.023/kWh
- Year shown is by when projects must begin construction

Initial Procurements + Utility-Scale Wind & Solar



- “Utility-scale” = greater than 2MW
- Initial procurements – begin later this year!
 - 1 million annual RECs each of wind and solar to begin delivery between 2019 and 2021
 - Safe-harbor ITC and PTC
 - **Near-term opportunities for off-site PPAs**
- Ongoing procurements

Behind-the-Meter Distributed Generation (DG)



- Distributed Generation = 2 MW or less
 - Small = 10 kW or less
 - Large = greater than 10 kW
- Via adjustable block program
 - Set REC prices for certain volume of RECs
 - Prices change over time as market develops
- **Opportunities for onsite solar**

Beyond the RPS: Other Renewables Provisions



- Net Metering
 - Preserves to original 5% cap
 - Ensures grandfathering for current customers
- Distributed Generation Rebate
 - Compensating DG customers for value to grid (geographic, time, performance-based, etc.)
 - Interim value: \$250/kW for C&I customers and community solar

Solar Land Use in IL → Less than 1%



	MW Solar Required*	Acres of Land**	Sq Mi of Land	As % of State	As % of Farmland***
2020	1,500	7,500	11.7	0.02%	0.03%
2025	2,250	11,250	17.6	0.03%	0.04%
2030	3,000	15,000	23.4	0.04%	0.06%

*Assumes ~50% of utility-scale solar installed with trackers. **Assumes 5 acres/MW solar installed.
***According to the Farmland Information Center, IL had 26.9 million acres of farmland in 2012 (most recent year available).