

CS² Community Solar Clearinghouse Solutions Program

Edith Makra, Metropolitan Mayors Caucus




Overview

- Municipal interest in solar
 - Greenest Region Compact
- Pathways to promote solar
 - SolSmart
 - Barriers to onsite solar
 - CS²





49 Consensus Sustainability Goals in 10 Categories

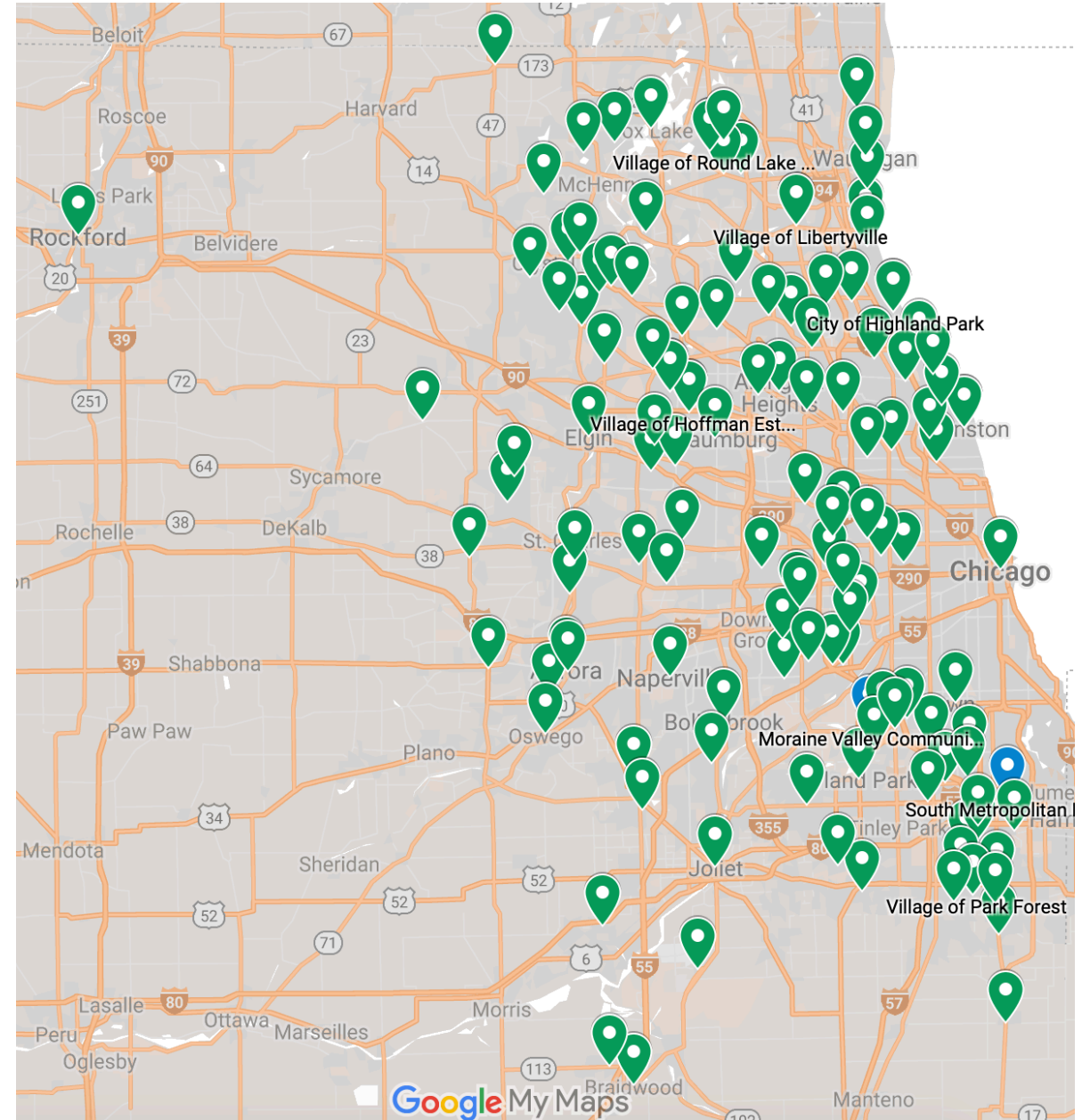
-  Climate
-  Economic Development
-  Energy
-  Land
-  Leadership
-  Mobility
-  Municipal Operations
-  Sustainable Communities
-  Water
-  Waste

GRC Adopted by Resolution

126 municipalities
3 counties
10 COGS
6 million residents



Barrington Area Council of Governments
Lake County Municipal League
McHenry County Council of Governments
Metro West Council of Governments
Northwest Municipal Conference
South Suburban Mayors & Managers
Southwest Conference of Mayors
West Central Municipal Conference
Will County Government League
DuPage Mayors and Managers Conference



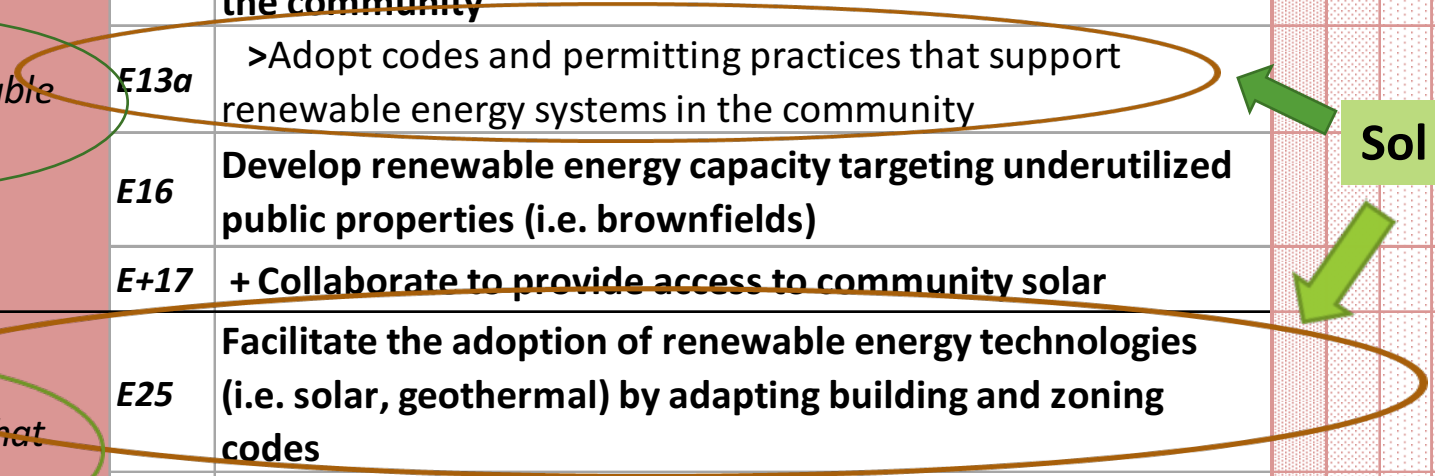
GRC Framework – Strategies to Achieve GRC Goals

Category	GOAL	OBJECTIVE	> STRATEGY	+ ADVANCED STRATEGY	Already achieved	In Progress	Planned for next 6 months	Planned for next 12-18 months	Interested in pursuing	Not planned	Not relevant	Contact Initials	Notes	Link to Resource					
					Renewable Energy	<i>Advance renewable energy</i>	E13	Support the adoption of renewable energy technologies in the community											
							E13a	>Adopt codes and permitting practices that support renewable energy systems in the community											
E16	Develop renewable energy capacity targeting underutilized public properties (i.e. brownfields)																		
E+17	+ Collaborate to provide access to community solar														Y				
ENERGY	Policy	<i>Enact policies that support clean energy</i>	E25	Facilitate the adoption of renewable energy technologies (i.e. solar, geothermal) by adapting building and zoning codes															
			E+29	+ Negotiate franchise agreement with utilities to exercise lump sum payment option to finance clean energy															

Sol Smart – MMC Cohort

Advance renewable energy

Enact policies that support clean energy



SolSmart



Pathways, tools, and assistance to achieve points for actions in these categories:

Criteria Areas	
Foundational Categories	Special Focus Categories
Permitting	Solar Rights
Planning, Zoning, and Development Regulations	Inspection
	Construction Codes
	Community Engagement
	Utility Engagement
	Market Development & Finance
Innovative Actions	

Solar success



- ***Advance renewable energy***
- Led 35 local gov's to earn SolSmart by streamlining solar codes & policies
- Results – 4300% growth in solar & local investment

#1



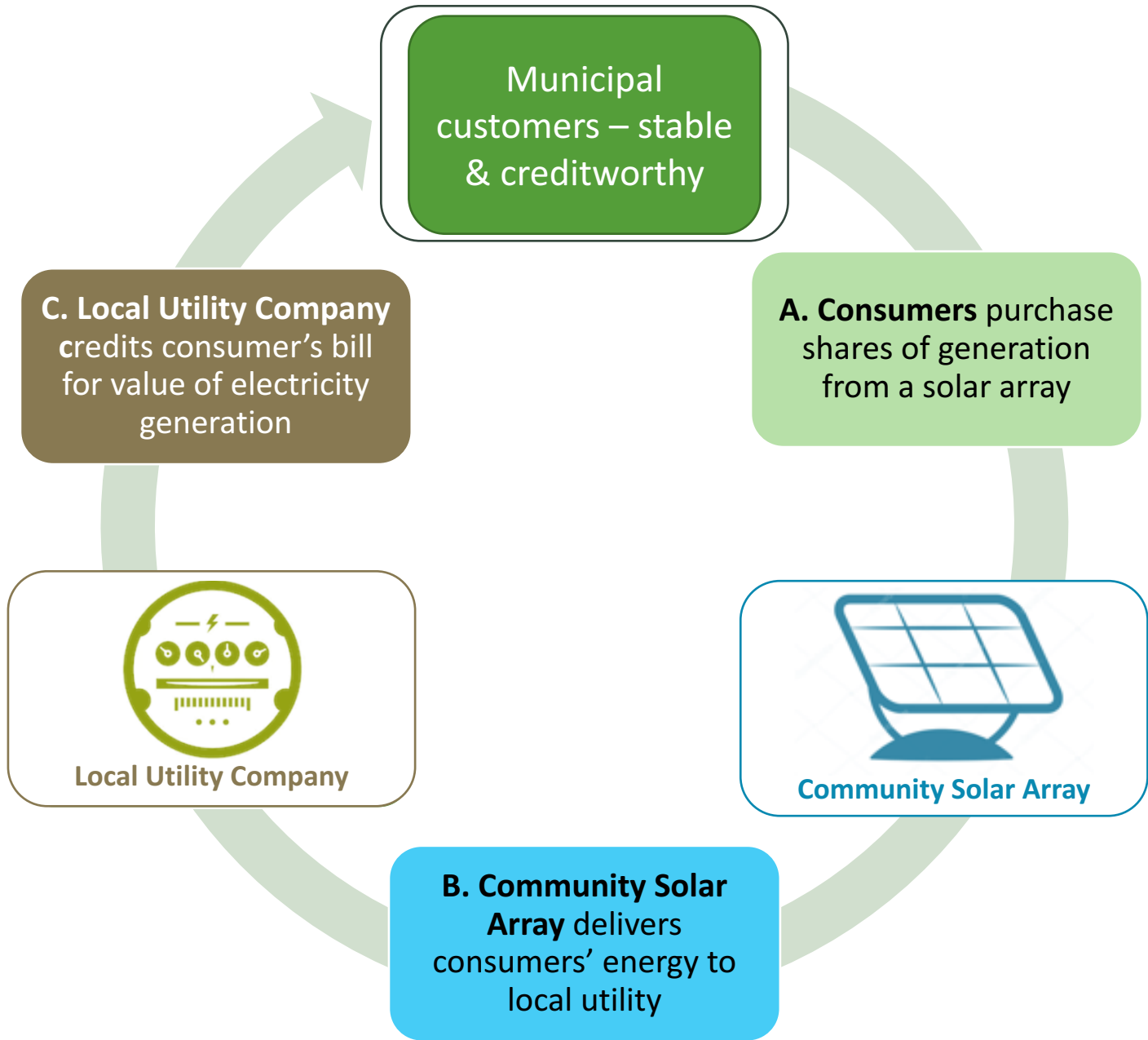
On-Site Solar for Public Facilities

- Successful public sector (behind the meter) requires:
 - Sufficient roof/land and infrastructure
 - Sufficient energy demand
 - Demonstrated cost saving
 - Agreement between developer and user

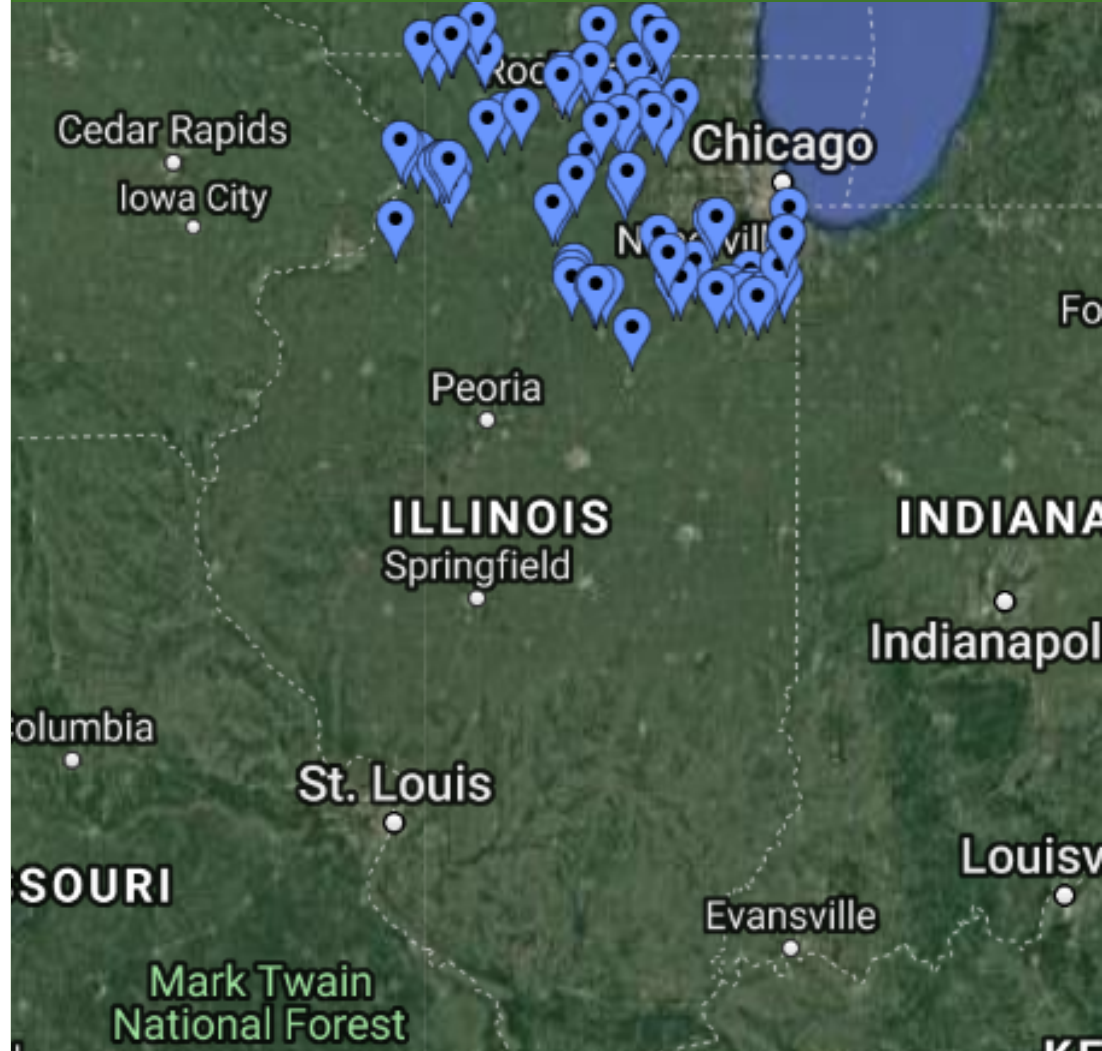


Municipal
franchise
agreement

COMMUNITY SOLAR



COMMUNITY SOLAR: ILLINOIS



75 COMMUNITY SOLAR PROJECTS APPROVED FOR NORTHERN ILLINOIS

CS² PROGRAM



The CS² Program is designed to simplify the community solar process for participating municipalities

Analyze

- Identify accounts that can benefit from Subscriptions
- Structure a contract structure that guarantees cost saving

Procure

- Identify qualified projects
- Set a single price through competitive bidding (RFP)
- Develop standardized terms and conditions

Match

- Assign municipal accounts to projects according to tariff
- Preparing contract documents and required disclosures

Manage

- Manage billing, collections & disbursements
- Provide reporting

CS² Procurement



Municipalities

- 80 Expressed interest and submitted account information
- CS² analyzed for savings
- Paid fee to join purchasing pool
- 34 joined CS²
- Will evaluate offers and contract with solar developers

Solar developers

- Won Illinois Power Agency lottery
- Secured land, financing – needs subscribers
- 12 were qualified
- 6 presented offers to meet aggregated demand

SUBSCRIPTION OFFERS

REQUEST FOR PRICING

- TARGETED FIRMS: 12
- RESPONSIVE FIRMS: 6
- PROJECTS SELECTED
 - ✓ OPTION A: 9 (18 MW)
 - ✓ OPTION B: 16 (32 MW)



TERMS	STANDARD OFFER	SPECIAL OFFER
ELIGIBLE ACCOUNTS	Residential, Small-Commercial, Watt-hour & General Lighting with Smart Meters and served on the ComEd Default Rate	
DISCOUNT FROM COMED RATE	10% (guaranteed savings)	30% (likely a lower cost than retail supply offers)
PAYMENT SCHEDULE	Same as current ComEd payment requirements	
DURATION	Up to 20-years	15-years
EARLY TERMINATION FEE	\$0	30% of future payments to supplier unless new Subscriber cannot be found
CREDIT RESTRICTIONS	None	80% must be from investment grade credit
DEVELOPERS	Soltage, Cenergy, Solarstone	Clearway Energy

SUBSCRIPTION OFFERS: ANNUAL SAVINGS

STANDARD OFFER

10% Savings, 20-Year term, \$0 Termination

Sample Account Data Points	Math	Values
Annual Consumption	A	40,000 kWh
Purchased Electricity Charge	B	\$0.060/kWh
Total Energy Supply Charges	$C = A * B$	\$2,400
10% Discount (Guaranteed)	$D = C * 10\%$	-\$240
Net Energy Supply Charges	$E = C - D$	\$2,160
Net Energy Supply Rate	$F = E / A$	\$0.054/kWh
Energy Only Rate	G	\$0.034/kWh
Capacity Only Rate	H	\$0.020/kWh
Net Savings over contract term	$I = D * 20$	\$4,800

SPECIAL OFFER

30% Savings, 15-Year term, 30% Termination

Sample Account Data Points	Math	Values
Annual Consumption	A	40,000 kWh
Purchased Electricity Charge	B	\$0.06/kWh
Total Energy Supply Charges	$C = A * B$	\$2,400
30% Discount (Guaranteed)	$D = C * 30\%$	-\$720
Net Energy Supply Charges	$E = C - D$	\$1,680
Net Energy Supply Rate	$F = E / A$	\$0.042/kWh
Energy Only Rate	G	\$0.022/kWh
Capacity Only Rate	H	\$0.020/kWh
Net Savings over contract term	$I = D * 15$	\$25,200

SUBSCRIPTION OFFERS: ANNUAL SAVINGS

STANDARD OFFER

10% Savings, 20-Year term, \$0 Termination

Sample Account Data Points	Math	Values
Annual Consumption	A	40,000 kWh
Purchased Electricity Charge	B	\$0.060/kWh
Total Energy Supply Charges	$C = A * B$	\$2,400
10% Discount (Guaranteed)	$D = C * 10\%$	-\$240
Net Energy Supply Charges	$E = C - D$	\$2,160
Net Energy Supply Rate	$F = E / A$	\$0.054/kWh
Energy Only Rate	G	\$0.034/kWh
Capacity Only Rate	H	\$0.020/kWh
Net Savings over contract term	$I = D * 20$	\$4,800

SPECIAL OFFER

30% Savings, 15-Year term, 30% Termination

Sample Account Data Points	Math	Values
Annual Consumption	A	40,000 kWh
Purchased Electricity Charge	B	\$0.06/kWh
Total Energy Supply Charges	$C = A * B$	\$2,400
30% Discount (Guaranteed)	$D = C * 30\%$	-\$720
Net Energy Supply Charges	$E = C - D$	\$1,680
Net Energy Supply Rate	$F = E / A$	\$0.042/kWh
Energy Only Rate	G	\$0.022/kWh
Capacity Only Rate	H	\$0.020/kWh
Net Savings over contract term	$I = D * 20$	\$25,200

Likely lower than current
retail offers

9/2018	Program design
10/2018 - 3/2019	initial muni and analysis
6 – 9/2019	assemble purchasing pool
10/2019	subscriptions to first community solar project in IL
2 – 5/2020	subscription agreements
Fall 2020	community solar project energized
Spring 2020	assemble 2 nd pool

CS² PROGRAM TIMELINE



Local Utility Company

METROPOLITAN MAYORS CAUCUS |
THE POWER BUREAU, LLC

RAINY COMMUNITY SOLAR DEVELOPMENT
ELGIN ILLINOIS

CS² and Sustainability



- Community solar RECs belong to utility
- Claims of green energy supply belong to utility
- Contributes to Illinois goal of 25% renewable energy by 2025 (RPS)
- CS² supports the growth of Illinois clean energy
- Local government are stable & desirable subscribers
- Community solar subscription feasible for local government – onsite PV is not

THANK YOU

CS² PROGRAM INQUIRIES

Mark Pruitt

219/921-3828

markpruitt@thepowerbureau.com

GREENEST REGION COMPACT INQUIRIES

Edith Makra

312/201-4505

emakra@mayorscaucus.org

© Copyright 2019, Metropolitan Mayors Caucus
33 South Wacker Drive, Suite 800 Chicago, IL 60606
www.mayorscaucus.org

